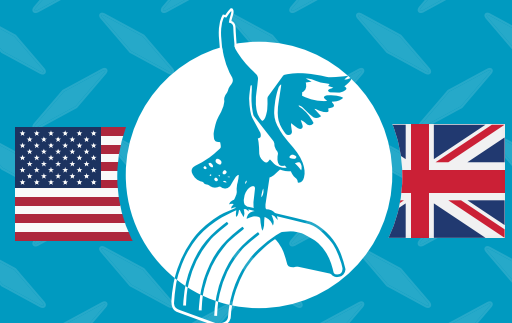




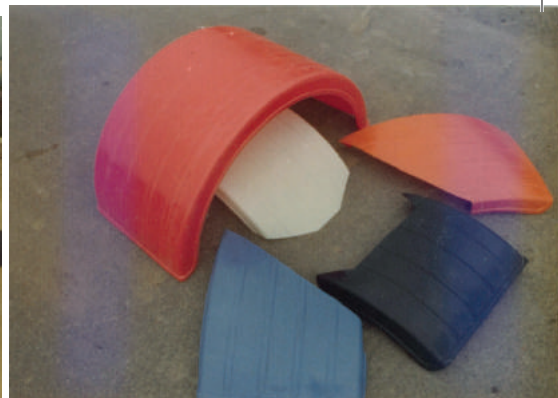
FEATHERWING FLEET ESSENTIALS



www.featherwing.com

Featherwing

Manufactured by Boydell & Jacks
Est. 1967



Pictures taken from our archives circa 1970



ON THE ROAD SINCE 1967...

HERITAGE AND HISTORY

In 1967 Boydell and Jacks was the first company in the world to conceive and produce a commercial vehicle fender from thermoplastic.

Remaining a family business for the past 53 years, we have been at the forefront of design and innovation, gaining an enviable reputation as a company more than willing to collaborate with our customers to help achieve their objectives.

1988 saw Boydell and Jacks become the first fender manufacturing company to be accredited with the UK quality assurance standard BS 5750 and thus becoming a BSI registered company. The original accreditation was maintained and over time a system has developed into BS EN ISO 9001-2008.

Our Featherwing branded products have become synonymous with quality and reliability, and have been adopted by many OE truck manufacturers, including such companies as Volvo, Paccar, Scania and many prestigious Semi Trailer manufacturers and body builders throughout the UK, Europe and worldwide.

Featherwing branded products are being specified and fitted by prestigious companies such as Ryder, DHL, TNT, XPO Logistics and UPS.

COMPANY VISION

Here at Boydell and Jacks, our core competence is in the high quality manufacture and distribution of the "Featherwing" range of components for the commercial vehicle industry. Our aim is to provide functional and innovative products, inspiring trust from our customers. We strive to do business with integrity and in an uncomplicated manner, delivering value and service at all times. Our staff are aware of the importance of all customers, and are empowered to embrace new technology and working practices in their pursuit to exceed expectations.

ENVIRONMENTAL POLICY

Boydell and Jacks believe that businesses are responsible for achieving good environmental practice and operating in a sustainable manner.

We are therefore committed to reducing our environmental impact and continually improving our environmental performance as an integral and fundamental part of our business strategy and operating methods. It is our priority to encourage our customers, suppliers and all business associates to do the same. Not only is this sound commercial sense for all, it is also a matter on delivering on our duty of care towards future generations.



e nasales@featherwing.com

+44 (0)1282 456411

www.featherwing.com

All dimensions nominal. The manufacturer reserves the right to alter sizes, specifications etc. without prior notice.

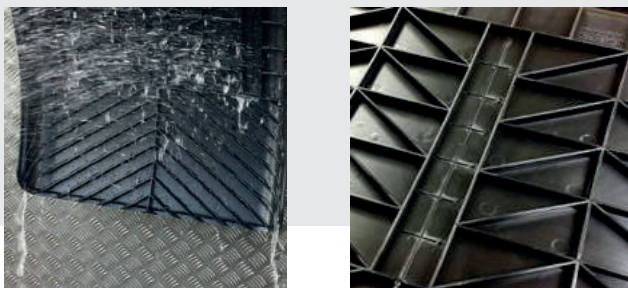
FEATHERWING SPRAY SUPPRESSION TECHNOLOGY AS STANDARD... POLY QUARTER FENDERS

- Advanced integrated anti-spray system
- The **ONLY** quarter fender that channels road spray away from the tire
- Increases driver visibility and safety
- Increases other road users' safety
- Pre-drilled for easy fitment
- Unique multi positioning mounting tube fitting option
- Allowing standard, low or custom mount to your truck
- Injection molded
- Available in black or silver
- Color stabilized with UV additive for resistance to fading
- Excellent heat and cold crack properties

"The **ONLY** quarter fender to give you 'away from the tire' integrated anti-spray technology and a 'unique' integrated multi position mounting tube option."



All design rights and patents applied for.



QF615KIT-BLACK

Includes:

- 2x Black quarter fenders with advanced integrated anti-spray
- 2x E-coated black, 18 gauge carbon steel mounting tubes, with poly end caps fitted
- 2x Zinc plated tube clamp
- 2x Black poly top flap
- Zinc plated hardware
- Installation guide



QF615KIT-SILVER

Includes:

- 2 x Silver quarter fenders with advanced intergrated anti-spray
- 2 x Powder coated silver (RAL 900) 18 gauge carbon steel mounting tubes, with poly end caps fitted
- 2 x Zinc plated tube clamp
- 2x Black poly top flap
- Zinc plated hardware
- Installation guide

e nasales@featherwing.com

+44 (0)1282 456411

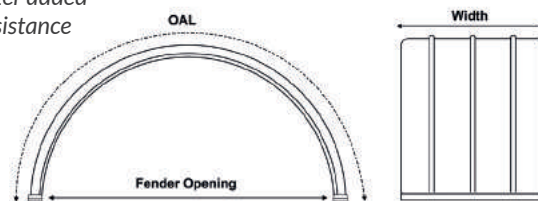
www.featherwing.com

All dimensions nominal. The manufacturer reserves the right to alter sizes, specifications etc. without prior notice.

ON THE ROAD SINCE 1967... POLY SINGLE AXLE FENDERS



- Unique styling, advanced design
- The original fender with spray and debris reducing side valances
- Manufactured from high grade poly
- Corrosion and UV resistant
- Easy to clean and maintain
- Lightweight... less weight = less fuel
- Durable with "bounce back ability"
- Excellent heat and cold crack properties
- Color UV stabilizer added for extra fade resistance



SUPER SINGLE

PART NO.	WIDTH (W)	FENDER OPENING (FO)	OVERALL FENDER LENGTH (OAL)	COLOR
USP485	19"	47 1/4"	65"	Black
USP485RED	19"	47 1/4"	65"	Red
USP485BLUE	19"	47 1/4"	65"	Blue
USP485SILVER	19"	47 1/4"	65"	Silver
USP485WHITE	19"	47 1/4"	65"	White

DUAL WHEEL 22.5

PART NO.	WIDTH (W)	FENDER OPENING (FO)	OVERALL FENDER LENGTH (OAL)	COLOR
USP635	25"	48"	69"	Black
USP635RED	25"	48"	69"	Red
USP635BLUE	25"	48"	69"	Blue
USP635SILVER	25"	48"	69"	Silver
USP635WHITE	25"	48"	69"	White

DUAL WHEEL 24.5

PART NO.	WIDTH (W)	FENDER OPENING (FO)	OVERALL FENDER LENGTH (OAL)	COLOR
USP670	26 1/2"	51"	77 1/2"	Black
USP670RED	26 1/2"	51"	77 1/2"	Red
USP670BLUE	26 1/2"	51"	77 1/2"	Blue
USP670SILVER	26 1/2"	51"	77 1/2"	Silver
USP670WHITE	26 1/2"	51"	77 1/2"	White



e nasales@featherwing.com

+44 (0)1282 456411

www.featherwing.com

All dimensions nominal. The manufacturer reserves the right to alter sizes, specifications etc. without prior notice.

POLY SINGLE AXLE FENDERS MOUNTING OPTIONS

1 CHOOSE YOUR MOUNTING TUBES...

FK-02



- 2 x 1 5/8" x 30" Cranked single bolt stainless steel mounting tubes
- 2 x Anti slip washer
- 2 x Tube end cap (fitted)
- 2 x Stainless steel washer and nut

FK-03



- 2 x 1 5/8" x 30" Cranked single bolt black e-coat mounting tubes
- 2 x Anti slip washer
- 2 x Tube end cap (fitted)
- 2 x Zinc plated washer and nut

FK-04-2



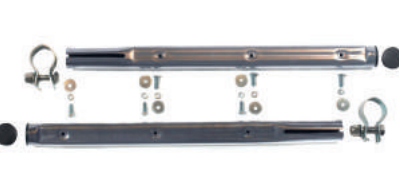
- 2 x 2" x 28" Black e-coat mounting tubes
- 2 x Zinc plated tube clamps
- 2 x Tube end cap (fitted)
- 6 x Back plates
- 1 x All hardware

FK-04-4



- 4 x 2" x 28" Black e-coat mounting tubes
- 4 x Zinc plated tube clamps
- 4 x Tube end cap (fitted)
- 12 x Back plates
- 2 x All hardware

FK-05-2



- 2 x 2" x 28" Silver powder coated mounting tubes
- 2 x Zinc plated tube clamps
- 2 x Tube end cap (fitted)
- 6 x Back plates
- 1 x All hardware

FK-05-4



- 4 x 2" x 28" Silver e-coat mounting tubes
- 4 x Zinc plated tube clamps
- 4 x Tube end cap (fitted)
- 12 x Back plates
- 2 x All hardware

FK-06



- 2 x 1 5/8" x 30" Straight single bolt Stainless steel mounting tubes
- 2 x Anti slip washer
- 2 x Stainless steel washer and nut

FK-07



- 2 x 1 5/8" x 30" Straight single bolt e-coat Black mounting tubes
- 2 x Anti slip washer
- 2 x Stainless steel washer and nut

2 CHOOSE YOUR FIXING BRACKETS...

USUB42KIT



- 4 x 1 5/8" U bolts
- 4 x Anti slip sleeve
- 1 x All hardware
- 4 x Back plates

IT42-4



- 4 x 1 5/8" IT brackets
- 4 x IT back plates
- 1 x All hardware

IT42HD-4



- 4 x 1 5/8" Heavy duty IT brackets
- 4 x IT back plates
- 1 x All hardware

3 DON'T FORGET YOUR POLE MOUNT!

USTS200



- 1 x Single bolt post
- 8" Long
- Packaged individually

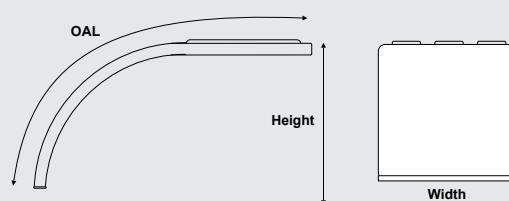
All dimensions nominal. The manufacturer reserves the right to alter sizes, specifications etc. without prior notice

POLY HALF TANDEM FENDERS



- Unique styling, advanced design
- The original fender with spray and debris reducing side valances
- Manufactured from high grade poly
- Corrosion and UV resistant
- Easy to clean and maintain
- Lightweight... less weight = less fuel
- Durable with "bounce back ability"
- Excellent heat and cold crack properties
- Designed for 22.5 or 24.5 Tires

PART NO.	WIDTH (W)	HEIGHT (H)	O/ALL LENGTH	COLOR
USP25HT	25"	25 1/2"	67"	Black
USP25HTRED	25"	25 1/2"	67"	Red
USP25HTBLUE	25"	25 1/2"	67"	Blue
USP25HTSILVER	25"	25 1/2"	67"	Silver
USP25HTWHITE	25"	25 1/2"	67"	White



POLY FULL TANDEM FENDERS

- 2 Part full tandem fender
- 2 Part easy fitment
- Saves \$, no need to replace the full tandem if there is collision damage
- Unique styling, advanced design
- The original fender with spray and debris reducing side valances
- Manufactured from high grade poly
- Corrosive and UV resistant
- Easy to clean and maintain
- Lightweight... less weight = less fuel
- Durable with "bounce back ability".
- Excellent heat and cold crack properties
- Designed for 22.5 or 24.5 Tires
- USPHT-JK01 Joining Kit included



JOINING KIT INCLUDED

PART NO.	WIDTH (W)	HEIGHT (H)	O/ALL LENGTH	COLOR
USP25FT	25"	25 1/2"	134"	Black
USP25FTRED	25"	25 1/2"	134"	Red
USP25FTBLUE	25"	25 1/2"	134"	Blue
USP25FTSILVER	25"	25 1/2"	134"	Silver
USP25FTWHITE	25"	25 1/2"	134"	White

GO TO PAGE 8 FOR MOUNTING OPTIONS

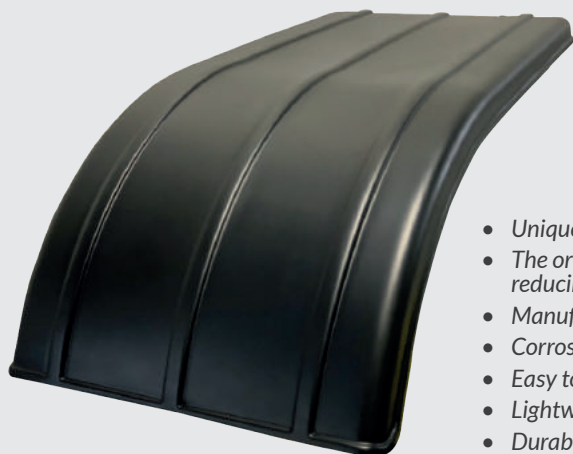
enasales@featherwing.com

+44 (0)1282 456411

www.featherwing.com

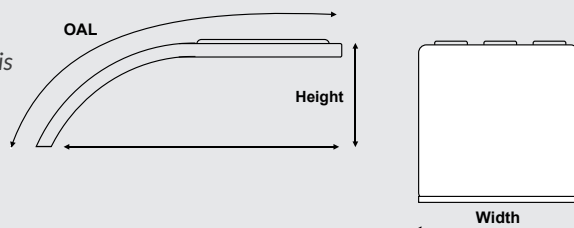
All dimensions nominal. The manufacturer reserves the right to alter sizes, specifications etc. without prior notice.

SHORT CURVE POLY HALF TANDEM FENDERS



- Unique styling, advanced design
- The original fender with spray and debris reducing side valances
- Manufactured from high grade poly
- Corrosion and UV resistant
- Easy to clean and maintain
- Lightweight... less weight = less fuel
- Durable with "bounce back ability"
- Excellent heat and cold crack properties
- Designed for 22.5 or 24.5 Tires
- Fleet colors available on orders over 250 pieces

PART NO.	WIDTH (W)	HEIGHT (H)	O/ALL LENGTH	COLOR
USP650HT-VF	25"	16"	54 3/4"	Black



SHORT CURVE POLY FULL TANDEM FENDERS



JOINING KIT INCLUDED

- 2 Part full tandem fender
- 2 Part easy fitment
- Saves \$, no need to replace the full tandem if there is collision damage
- Unique styling, advanced design
- The original fender with spray and debris reducing side valances
- Manufactured from high grade poly
- Corrosive and UV resistant
- Easy to clean and maintain
- Lightweight... less weight = less fuel
- Durable with "bounce back ability".
- Excellent heat and cold crack properties
- Designed for 22.5 or 24.5 Tires
- Fleet colors available on orders over 250 pieces
- USPHT-JK01 Joining Kit included

PART NO.	WIDTH (W)	HEIGHT (H)	O/ALL LENGTH	COLOR
USP650FT-VF	25"	16"	109 1/2"	Black

GO TO PAGE 8 FOR MOUNTING OPTIONS

e nasales@featherwing.com +44 (0)1282 456411 www.featherwing.com

All dimensions nominal. The manufacturer reserves the right to alter sizes, specifications etc. without prior notice.

POLY HALF & FULL TANDEM FENDERS MOUNTING OPTIONS

1 **YOU MUST HAVE POLY HALF & TANDEM END SUPPORT KIT**

HTE100



- 2 x Riser plates
- 4 x 1 5/8" clamps
- 2 x Balota anti-vibration washer
- 1 x Hardware

2 **CHOOSE YOUR UNDER MOUNTING TUBES** FOR YOUR HTE100 KIT

FK-02



- 2 x 1 5/8" x 30" Cranked single bolt stainless steel mounting tubes
- 2 x Anti slip washer
- 2 x Tube end cap (fitted)
- 2 x Stainless steel plated washer and nut

FK-03



- 2 x 1 5/8" x 30" Cranked single bolt Black e-coat mounting tubes
- 2 x Anti slip washer
- 2 x Tube end cap (fitted)
- 2 x Zinc plated washer and nut

3 **CHOOSE YOUR FRONT MOUNTING TUBES**

FK-05-2



- 2 x 2" x 28" Silver powder coated mounting tubes
- 2 x Stainless Steel plated tube clamps
- 2 x Tube end cap (fitted)
- 6 x Back plates
- 1 x All hardware

FK-04-2



- 2 x 2" x 28" Black e-coat mounting tubes
- 2 x Zinc plated tube clamps
- 2 x Tube end cap (fitted)
- 6 x Back plates
- 1 x All hardware

FK-06



- 2 x 1 5/8" x 30" Straight single bolt Stainless steel mounting tubes
- 2 x Anti slip washer
- 2 x Stainless steel washer and nut

FK-02



- 2 x 1 5/8" x 30" Cranked single bolt stainless steel mounting tubes
- 2 x Anti slip washer
- 2 x Tube end cap (fitted)
- 2 x Stainless steel plated washer and nut

FK-03



- 2 x 1 5/8" x 30" Cranked single bolt black e-coat mounting tubes
- 2 x Anti slip washer
- 2 x Tube end cap (fitted)
- 2 x Zinc plated washer and nut

FK-07



- 2 x 1 5/8" x 30" Straight single bolt e-coat Black mounting tubes
- 2 x Anti slip washer
- 2 x Stainless steel washer and nut

4 **CHOOSE YOUR FIXING BRACKETS...** IF USING FK-02 OR FK-03 ON THE FRONT OF THE TANDEM

USUB42KIT



IT42-4



IT42HD-4



DON'T FORGET YOUR POLE MOUNT!

USTS200



- 1 x Single bolt post
- 8" Long
- Packaged individually

MID LIFT AXLE FENDERS

POLY MID LIFT AXLE FENDERS

- Designed especially for 255/70R 22.5 mid lift axle Tires
- Unique styling, advanced design
- The original fender with spray and debris reducing side valances
- Manufactured from high grade poly
- Corrosion and UV resistant
- Easy to clean and maintain
- Lightweight... less weight = less fuel
- Durable with "bounce back ability"
- Excellent heat and cold crack properties
- Fleet colors on volume request



PART NO.	WIDTH (W)	FENDER OPENING (FO)	OVERALL FENDER LENGTH (OAL)	COLOR
USP320	12 1/2"	42"	60 1/2"	Black

POLISHED ALUMINIUM MID LIFT AXLE FENDERS



- Designed especially for 255/70R 22.5 mid lift axle Tires
- The original Fender with spray and debris reducing side valances
- Manufactured from High Grade Polished Aluminium
- Fully wired edges for stability
- Easy to clean and maintain
- Lightweight... less weight = less fuel

PART NO.	WIDTH (W)	FENDER OPENING (FO)	OVERALL FENDER LENGTH (OAL)	COLOR
PA320	12 1/2"	42"	60 1/2"	Polished Aluminium

e nasales@featherwing.com

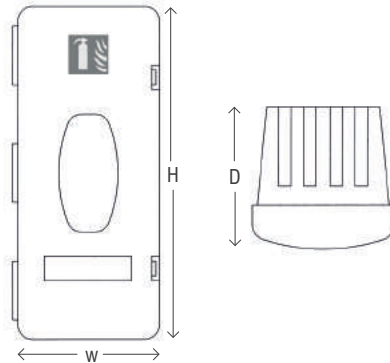
+44 (0)1282 456411

www.featherwing.com

All dimensions nominal. The manufacturer reserves the right to alter sizes, specifications etc. without prior notice.

FRONT LOADING FIRE EXTINGUISHER CASES

- All plastic construction, non-corrosive
- Lightweight
- Viewing window
- Internal extinguisher strap
- Suitable for most 13 lb and 20 lb extinguishers



BJB-RB155 Truck Mounted



BJB-RB155

Part No.	Width (W)	Height (H)	Depth (D)	Description
BJB-RB155	11 1/2"	27 1/4"	10 1/4"	Front loading extinguisher box including internal strap and viewing window suitable for most extinguishers up to 20 lb

TOP LOADING FIRE EXTINGUISHER CASE 13 lb

- Designed specifically to hold up to 13 lb fire extinguisher
- Ideal for general fitment, or when space is at a premium
- Suitable for surface mounting or under hanging fitment
- Quick release lid which falls clear of the box for fast access
- High grade poly
- Lightweight construction, good chemical and impact resistance, fitted with waterproof seal
- Universal fitting kit



BJB231



BJB231FIX

Part No.	Width (W)	Height (H)	Depth (D)	Description
BJB231	11 1/4"	20"	8 3/4"	Extinguisher case – suits FE-PD6G 13 lb fire extinguisher.
BJB231FIX	-	-	-	Fitting kit

*Protect your extinguisher,
Protect your investment.*

**With a
Featherwing
Extinguisher
Case**



**Without a
Featherwing
Extinguisher
Case**

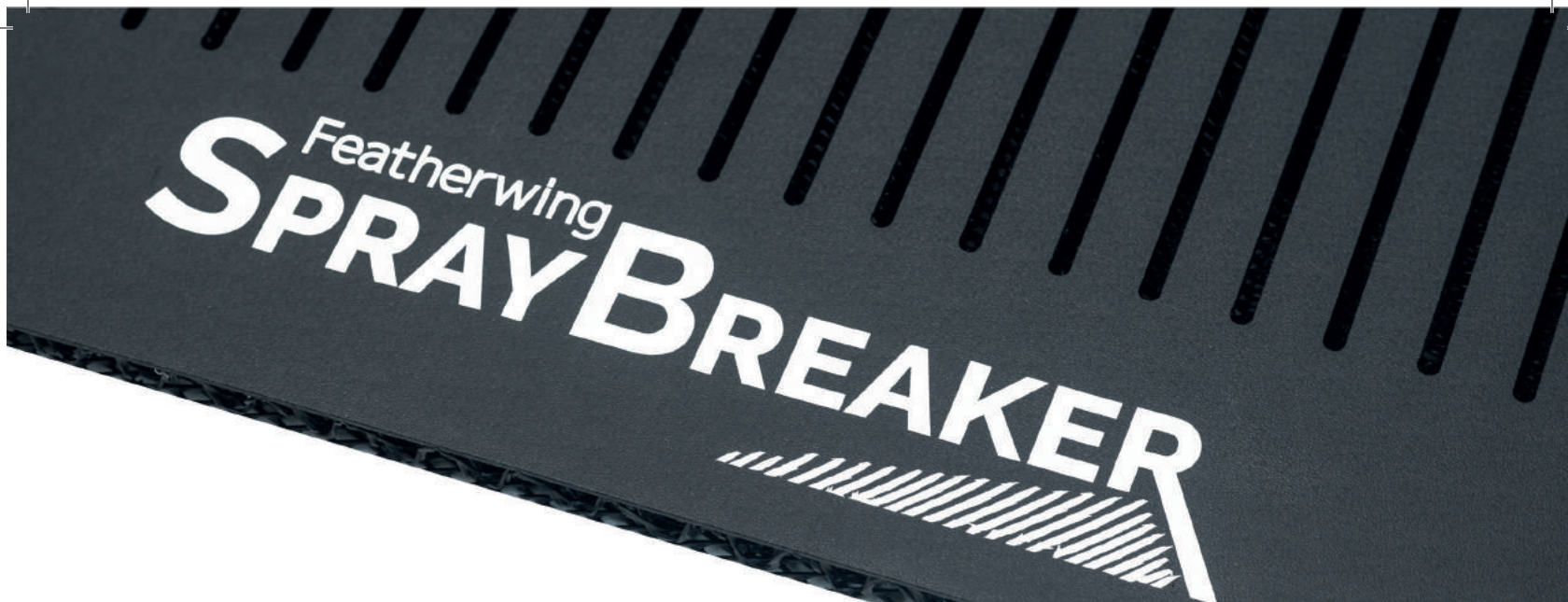


e nasales@featherwing.com

+44 (0)1282 456411

www.featherwing.com

All dimensions nominal. The manufacturer reserves the right to alter sizes, specifications etc. without prior notice.



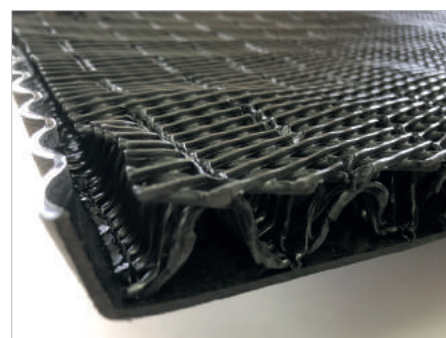
Featherwing SPRAYBREAKER™

The only **'true'** aerodynamic,
fuel saving, spray suppression mudflap.

- Aerodynamic – lets air flow through, cutting drag and saving fuel
- Tested at the University of Lancaster, England. Spray Breaker creates 33% less drag than standard truck mud flaps - FACT
- Spray Breaker was also proven while testing at the university to create 13% less drag than its main competitor
- Spray Breaker was tested under the EU spray suppression test criteria against its main US competitor and collected 433% more water - FACT
- Spray Breaker is the only true aerodynamic spray suppression mud flap
- Spray Breaker increases driver visibility and safety
- Spray Breaker increases other road users visibility and safety
- Spray Breaker helps to create a better environment by reducing CO² emissions
- Spray Breaker keeps trucks cleaner
- Spray Breaker is a light weight, strong, one piece construction
- Spray Breaker is easy to fit
- Spray Breaker measures 3/4 of an inch in thickness

Part No.	Width (W)	Length (L)
SB2428	24"	28"
SB2430	24"	30"
SB2432	24"	32"

Custom sizes available. Contact your Featherwing representative.



e nasales@featherwing.com

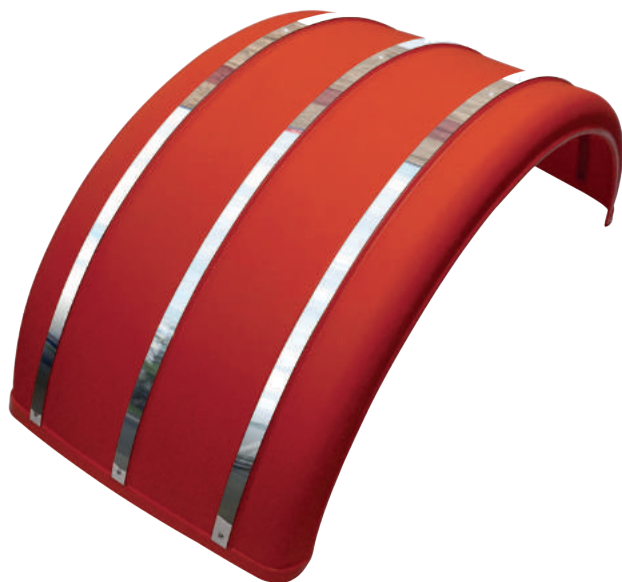
+44 (0)1282 456411

www.featherwing.com

All dimensions nominal. The manufacturer reserves the right to alter sizes, specifications etc. without prior notice.

GIVE YOUR TRUCK & FENDERS 'THE EDGE'...

Prestige™ FENDER STAINLESS STEEL KIT



SUPER SINGLE

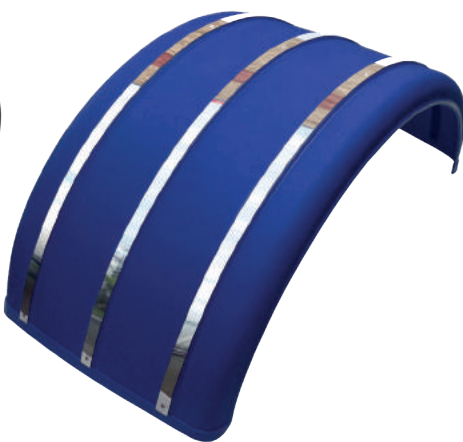
PART NO.	WIDTH (W)	FENDER OPENING (FO)	OVERALL FENDER LENGTH (OAL)	COLOR
USP485P	19"	47 1/4"	65"	Black
USP485P-RED	19"	47 1/4"	65"	Red
USP485P-BLUE	19"	47 1/4"	65"	Blue

Fenders sold individually

DUAL WHEEL 22.5

PART NO.	WIDTH (W)	FENDER OPENING (FO)	OVERALL FENDER LENGTH (OAL)	COLOR
USP635P	25"	48"	69"	Black
USP635P-RED	25"	48"	69"	Red
USP635P-BLUE	25"	48"	69"	Blue

Fenders sold individually



**POLY SINGLE AXLE FENDER
COMPLETE WITH STAINLESS
STEEL INLAY KIT**



[e nasales@featherwing.com](mailto:enasales@featherwing.com)

+44 (0)1282 456411

www.featherwing.com

All dimensions nominal. The manufacturer reserves the right to alter sizes, specifications etc. without prior notice.

UNIVERSAL ACCESSORIES

DOCUMENT HOLDER

- Designed for extreme duty
- Fully recyclable
- Water resistant seal
- Easy fit moulded mounting system
- Lightweight – manufactured from high grade poly
- High chemical and impact resistance
- Secure screw lid fastening system

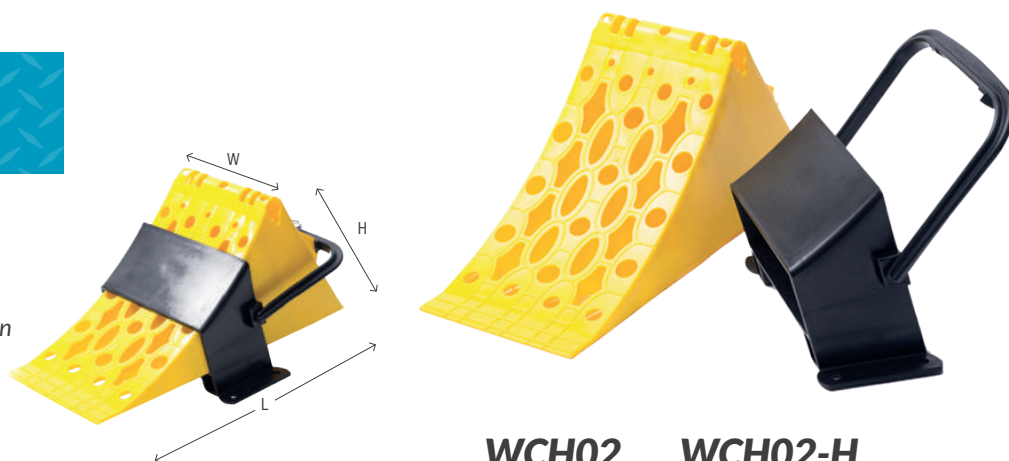
DOC103



Part No.	Length (L)	Outer Dia' (OD)	Internal Dia' (ID)	Color
DOC103	12 1/2"	3 3/4"	3 1/4"	Black

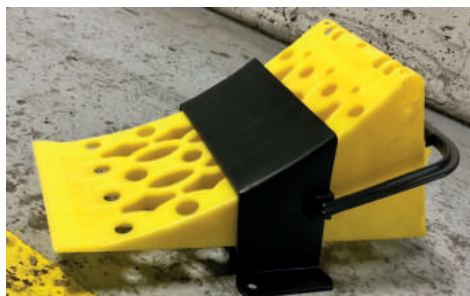
WHEEL CHOCK

- Conforms to DIN-76051-53
- Tested to +125°F / -40°F
- Heavy duty high grade poly construction
- Corrosion resistant poly holder
- Integrated 'bite bar' on bottom



WCH02 WCH02-H

Part No.	Length	Height	Width	Weight	Description
WCH02	19 3/4"	11"	8"	4lb	Wheel chock
WCH02-H	-	-	-	1.4lb	Holder



e nasales@featherwing.com

+44 (0)1282 456411

www.featherwing.com

All dimensions nominal. The manufacturer reserves the right to alter sizes, specifications etc. without prior notice.

HERE AT FEATHERWING WE ARE MORE THAN JUST A CATALOGUE

FEATHERWING CUSTOM PROGRAM

From conception to completion, our Special Projects Team can provide custom manufactured solutions for your specific fender, spray suppression and safety products.



FEATHERWING PRIVATE LABEL

Need a private label solution?
Our Special Projects Team can offer company specific programs to suit your needs.



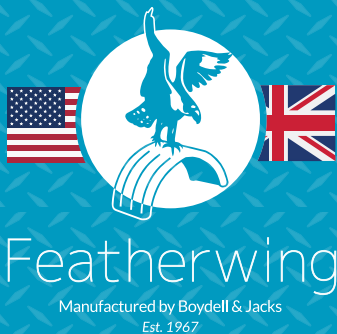
No:	BARCODE NO:	-	APPROVED BY:	Version
CUSTOMER:	DETAIL:			1
CUSTOMER REF: Feather Wing	JOB No: 26469	DATE:		
DATE: 21.12.16	INKS: Reflex Blue			
MADE CUT BY: Heather		CHECKED BY:		

133				
646				
133				
	630	133	633	133 35

Contact us for further details

e nasales@featherwing.com +44 (0)1282 456411 www.featherwing.com

All dimensions nominal. The manufacturer reserves the right to alter sizes, specifications etc. without prior notice.



The Original Fender Crush Test

**Featherwing fenders are tough,
and always have been since 1967.**

HOW TOUGH?

The photos below are taken from our very first catalogue in 1968. They show company founder, Mr Ray Jacks, and Engineer, Mr Tom Kennedy, inspecting an early Featherwing Poly Fender, after a very basic, but 'stylish test'.

Rest assured, with Featherwing fenders you have over 53 years of heritage, expertise and knowhow in every Fender we produce. You can't get that from anywhere else!



**TOUGH IN 1967, STILL TOUGH
53 YEARS LATER...**

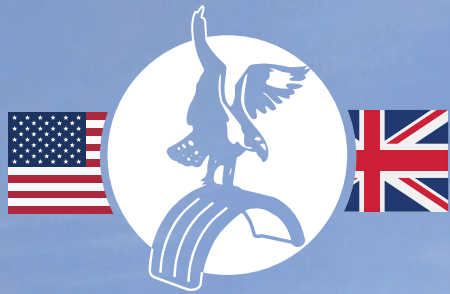


[e nasales@featherwing.com](mailto:enasales@featherwing.com)

+44 (0)1282 456411

www.featherwing.com

All dimensions nominal. The manufacturer reserves the right to alter sizes, specifications etc. without prior notice.



Featherwing

Manufactured by Boydell & Jacks
Est. 1967



Featherwing products proudly distributed by.

Boydell and Jacks Ltd Wingard House, Lincoln Street,
Healey Wood Industrial Estate, Burnley, BB11 2HW, UK

t +44 (0)1282 456411 f +44 (0)1282 437496
e nasales@featherwing.com www.featherwing.com

NACAT
0419



Certificate No. Q05804
Boydell and Jacks Ltd Quality Control
Procedures conform to
BS EN ISO 9001:2008